



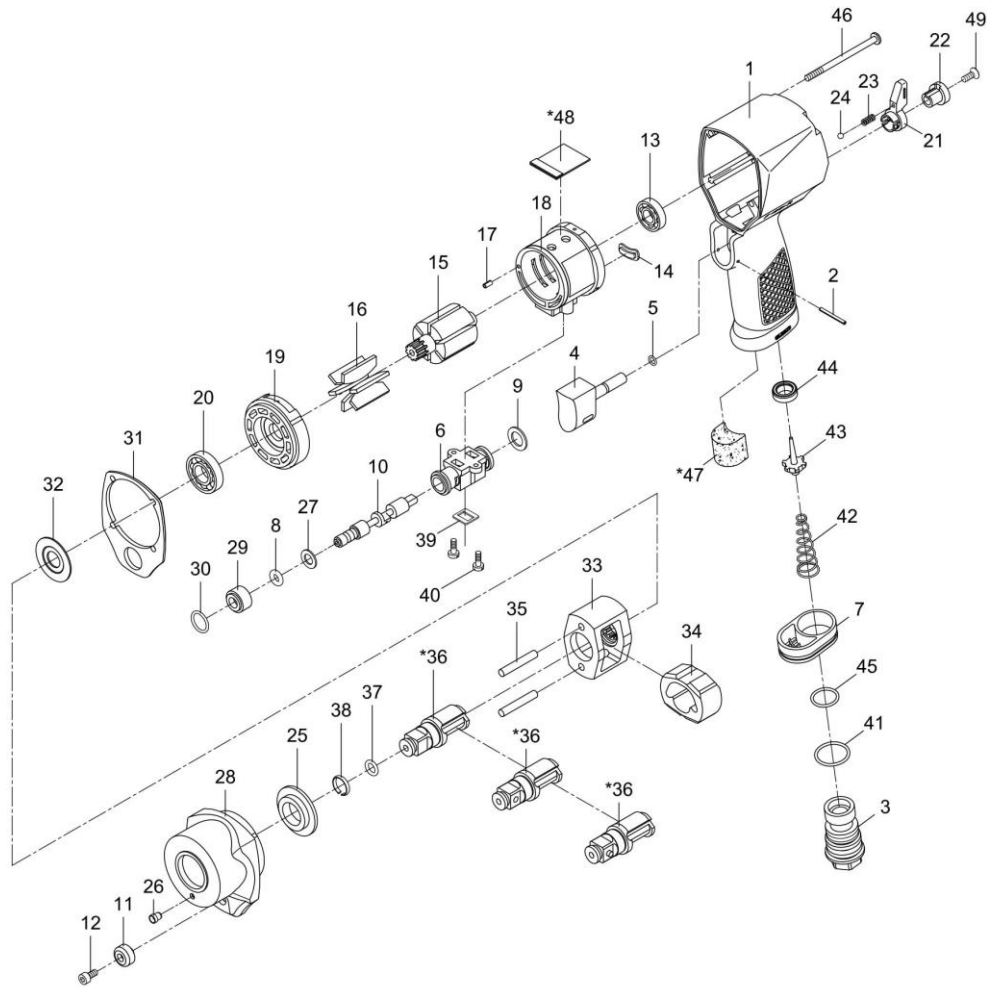
BP-2100QCP2 1/2" STUBBY IMPACT WRENCH



Actual product may be slightly different from the product described herein.

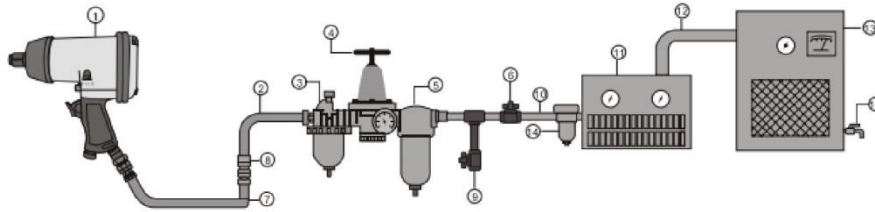
Tool Specification:

Square Drive :	1/2"
Free Speed:	10,000 RPM
Max.Torque:	700 ft-lbs (949 Nm)
Working Torque Range:	25-350 ft-lbs (34-475 Nm)
Air Inlet:	1/4" NPT
Hose Size:	3/8" I.D.
Air Pressure:	90 P.S.I.
Air Consumption:	4.9 CFM
Weight:	1.21 KG



Index No.	Parts No.	Description	Index No.	Parts No.	Description
1	BP-2100QCP201	Motor Housing	27	BP-2100QCP227	Washer
2	BP-2100QCP202	Spring Pin (2x22)	28	BP-2100QCP228	Hammer Case
3	BP-2100QCP203	Air Inlet	29	BP-2100QCP229	Valve Bushing
4	BP-2100QCP204	Trigger	30	BP-2100QCP230	O-Ring (12.7x1.7)
5	BP-2100QCP205	O-Ring (4x1)	31	BP-2100QCP231	Gasket
6	BP-2100QCP206	Reverse Valve	32	BP-2100QCP232	Washer
7	BP-2100QCP207	Exhaust Diffuser	33	BP-2100QCP233	Hammer Cage
8	BP-2100QCP208	O-Ring (5.6x3)	34	BP-2100QCP234	Hammer
9	BP-2100QCP209	Gasket	35	BP-2100QCP235	Hammer Pin (2) (5.1x32)
10	BP-2100QCP210	Reverse Stem	*36	BP-2100QCP236	Anvil (R-Type 1/2")
11	BP-2100QCP211	Button	*36	BP-2100QCP236-01	Anvil (RH-Type 1/2")
12	BP-2100QCP212	Screw (M3x6L)	*36	BP-2100QCP236-02	Anvil (M-Type 1/2")
13	BP-2100QCP213	Ball Bearing (EE3)	37	BP-2100QCP237	O-Ring (6.5x2)
14	BP-2100QCP214	Gasket	38	BP-2100QCP238	Retaining Ring
15	BP-2100QCP215	Rotor	39	BP-2100QCP239	Gasket
16	BP-2100QCP216	Rotor Blade (6)	40	BP-2100QCP240	Screw (2)
17	BP-2100QCP217	Spring Pin (2.5x5)	41	BP-2100QCP241	O-Ring (20.35x1.78)
18	BP-2100QCP218	Cylinder	42	BP-2100QCP242	Valve Spring
19	BP-2100QCP219	Front End Plate	43	BP-2100QCP243	Valve Stem
20	BP-2100QCP220	Ball Bearing (EE4)	44	BP-2100QCP244	Rubber Spacer
21	BP-2100QCP221	Reverse Lever	45	BP-2100QCP245	O-Ring (15.7x1.7)
22	BP-2100QCP222	Button	46	BP-2100QCP246	Screw (4) (M4x65L)
23	BP-2100QCP223	Spring	*47	BP-2100QCP247	Muffler Material
24	BP-2100QCP224	Steel Ball (3/32")	*48	BP-2100QCP248	Muffler Material
25	BP-2100QCP225	Anvil Bushing	49	BP-2100QCP249	Screw (M3x8L)
26	BP-2100QCP226	Oil Cap (1/8")			

AIR SUPPLY SETUP AND CONNECTION



AIR SYSTEM LAYOUT:

- | | | |
|------------------------|-------------------------------------|-----------------------------------|
| 1. Air Tool | 6. Shut Off Valve | 11. Air Dryer |
| 2. Air Hose 3/8"(I.D.) | 7. Whip Hose | 12. 1" Or Larger Pipe And Fitting |
| 3. Oiler | 8. Coupler Body And Connector | 13. Air Compressor |
| 4. Pressure Regulator | 9. Drain Daily | 14. Auto Drain |
| 5. Filter | 10. 1/2" Or Larger Pipe And Fitting | 15. Drain Daily |

1. For optimal results you should incorporate a regulator, oiler and an inline filter.
2. If you are not using an automatic lubricating system, before operating the tool, add a few drops of Pneumatic Tool Oil to the air-line connection. Add more after each hour of constant using.
3. Do not exceed maximum air pressure of 90 PSI/ 6.2 bar or as stated on tool nameplate.

To prevent serious injury, read and understand all warning and instructions before use.

SAFETY RULES



READ, UNDERSTAND AND KEEP THESE INSTRUCTIONS,
WARNING Failure to follow all instructions listed below may result in serious injury.

WORK AREA HAZARD & PERSONAL SAFETY

1. Keep your work area clean and well lit.
2. Do not operate power tools in explosive atmospheres, such as in the presence of combustible liquid, gases or dust. Power tools create sparks which may ignite the dust or fumes.
3. Disconnect tool before performing service or when not in use.
4. High sound levels can cause permanent hearing loss. Use hearing protection during operation.
5. Maintain a balanced body position and secure footing.
6. Slips/Trips/Falls are a major cause of serious injury or death. Be aware of excess hose left on the working floor.
7. Repetitive work motions, awkward positions and exposure to vibration can be harmful to hands and arms. If numbness, tingling, pain or whitening of the skin occurs, stop using the tool and consult a physician.
8. Always wear impact-resistant eye and face protection when operating, repairing or performing maintenance of the tool or while changing tool accessories.

TOOL USE AND CARE

1. Use support handle or other method to secure and support the work piece to a stable platform.
2. Do not force the tool. Use the correct tool for your application. Using the correct tool which is specifically designed for a select job will provide better tool performance and make the job easier.

3. Disconnect the air supply before making any adjustments, changing accessories, or storing the tool. Always disconnect the air supply before performing any inspection, maintenance or tool cleaning.
4. Use only accessories recommended by the manufacturer for your model.
5. When using a tool that is designed to have a guard, the guard should be in place to provide protection from flying debris, grinding residue or sparks.
6. Do not leave the tool unattended when it is connected to an air supply.
7. Use compressed air only.

OPERATING INSTRUCTIONS

ONLY use accessories recommended by Boston Pneumatic. Check the position of the reversing mechanism before operating the tool so as to be aware of the direction of rotation when operating. Use only impact sockets and accessories. Do not use the hand sockets or accessories. Check the drive end of the tool to make sure that the socket retainer functions correctly and that sockets and drive ends are not excessively worn which may allow the socket to come off when rotating. Connections requiring specific torque must be checked with a torque meter after fitting with an impact wrench.

LUBRICATION & MAINTENANCE

Lubricate the tool daily with a high grade of air tool oil. If no air line oiler is used, run a teaspoon of oil through the tool. The oil can be squirted into the tool air inlet, or into the hose at the nearest connection to the air supply, prior to operating the tool. A rust inhibitive oil is acceptable for air tools.



Boston Pneumatic Tools and Assembly Systems

Tel : +1 (214) 586 3765
www.bostonpneumatic.com