



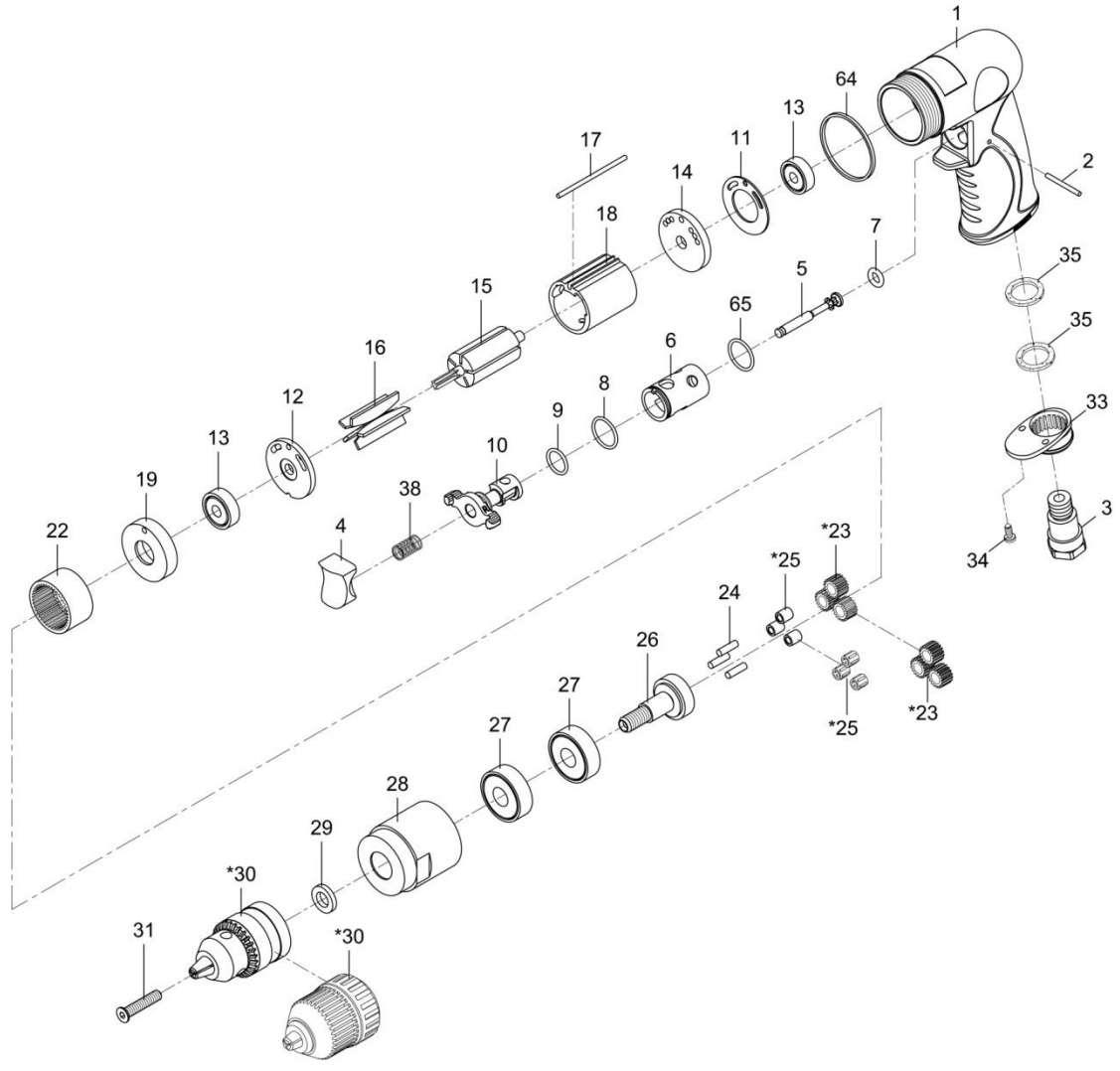
BP-3818PR 3/8" REVERSIBLE DRILL



Actual product may be slightly different from the product described herein.

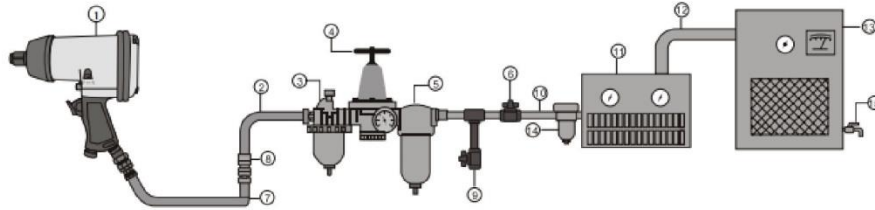
Tool Specification:

Chuck Size Inch:	3/8" (10)
Free Speed :	1,800 RPM
Air Inlet:	1/4" NPT
Hose Size:	3/8" I.D.
Air Pressure:	90 P.S.I.
Average Air Consumption:	4 CFM
Weight:	1.1 KG



Index No.	Parts No.	Description	Q'ty	Index No.	Parts No.	Description	Q'ty
1	BP-1208PR01	Motor Housing	1	19	BP-1208PR19	Front End Plate	1
2	BP-1208PR02	Pin	1	22	BP-1208PR22	Internal Gear	1
3	BP-1208PR03	Air Inlet	1	23	BP-3818PR23	Planet Gear	3
4	BP-1208PR04	Trigger	1	24	BP-11124	Pin (4*13.8)	3
5	BP-1208PR05	Valve Stem	1	25	BP-3818PR25	Needle Bearing (4*7*8)	3
6	BP-1208PR06	Valve Bushing	1	26	BP-3818PR26	Work Spindle	1
7	BP-1208PR07	O-Ring	1	27	BP-1208PR27	Ball Bearing (6201z)	2
8	BP-1208PR08	O-Ring	1	28	BP-3818PR28	Clamp Nut	1
9	BP-1208PR09	O-Ring	1	29	BP-1205P33	Washer	1
10	BP-1208PR10	Reverse Lever	1	30	BP-3818PR30	Keyless Chuck (3/8")	1
11	BP-1208PR11	Motor Gasket	1	31	BP-3818PR31	Screw	1
12	BP-1208PR12	End Plate	1	33	BP-1208PR33	Exhaust Diffuser	1
13	BP-DG2217	Ball Bearing (626zz)	2	34	BP-1208PR34	Screw	2
14	BP-1208PR14	Rear End Plate	1	35	BP-1208PR35	Damping Material	2
15	BP-1208PR15	Rotor	1	38	BP-1208PR38	Valve Spring	1
16	BP-1208PR16	Rotor Blades	5	64	BP-1208PR64	Decoration Ring	1
17	BP-1208PR17	Pin	1	65	BP-1208PR65	O-Ring	1
18	BP-1208PR18	Cylinder	1				

AIR SUPPLY SETUP AND CONNECTION



AIR SYSTEM LAYOUT:

- | | | |
|-------------------------|-------------------------------------|-----------------------------------|
| 1. Air Tool | 6. Shut Off Valve | 11. Air Dryer |
| 2. Air Hose 3/8" (I.D.) | 7. Whip Hose | 12. 1" Or Larger Pipe And Fitting |
| 3. Oiler | 8. Coupler Body And Connector | 13. Air Compressor |
| 4. Pressure Regulator | 9. Drain Daily | 14. Auto Drain |
| 5. Filter | 10. 1/2" Or Larger Pipe And Fitting | 15. Drain Daily |

1. For optimal results you should incorporate a regulator, oiler and an inline filter.
2. If you are not using an automatic lubricating system, before operating the tool, add a few drops of Pneumatic Tool Oil to the air-line connection. Add more after each hour of constant using.
3. Do not exceed maximum air pressure of 90 PSI/ 6.2 bar or as stated on tool nameplate.

To prevent serious injury, read and understand all warning and instructions before use.

SAFETY RULES



READ, UNDERSTAND AND KEEP THESE INSTRUCTIONS,
WARNING Failure to follow all instructions listed below may result in serious injury.

WORK AREA HAZARD & PERSONAL SAFETY

1. Keep your work area clean and well lit.
2. Do not operate power tools in explosive atmospheres, such as in the presence of combustible liquid, gases or dust. Power tools create sparks which may ignite the dust or fumes.
3. Disconnect tool before performing service or when not in use.
4. High sound levels can cause permanent hearing loss. Use hearing protection during operation.
5. Maintain a balanced body position and secure footing.
6. Slips/Trips/Falls are a major cause of serious injury or death. Be aware of excess hose left on the working floor.
7. Repetitive work motions, awkward positions and exposure to vibration can be harmful to hands and arms. If numbness, tingling, pain or whitening of the skin occurs, stop using the tool and consult a physician.
8. Always wear impact-resistant eye and face protection when operating, repairing or performing maintenance of the tool or while changing tool accessories.

TOOL USE AND CARE

1. Use support handle or other method to secure and support the work piece to a stable platform.
2. Do not force the tool. Use the correct tool for your application. Using the correct tool which is

specifically designed for a select job will provide better tool performance and make the job easier.

3. Disconnect the air supply before making any adjustments, changing accessories, or storing the tool. Always disconnect the air supply before performing any inspection, maintenance or tool cleaning.
4. Use only accessories recommended by the manufacturer for your model.
5. When using a tool that is designed to have a guard, the guard should be in place to provide protection from flying debris, grinding residue or sparks.
6. Do not leave the tool unattended when it is connected to an air supply.
7. Use compressed air only.

OPERATING INSTRUCTIONS

ONLY use accessories recommended by Sunmatch. Check the position of the reversing mechanism before operating the tool so as to be aware of the direction of rotation when operating. Use only impact sockets and accessories. Do not use the hand sockets or accessories. Check the drive end of the tool to make sure that the socket retainer functions correctly and that sockets and drive ends are not excessively worn which may allow the socket to come off when rotating. Connections requiring specific torque must be checked with a torque meter after fitting with an impact wrench.

LUBRICATION & MAINTENANCE

Lubricate the tool daily with a high grade of air tool oil. If no air line oiler is used, run a teaspoon of oil through the tool. The oil can be squirted into the tool air inlet, or into the hose at the nearest connection to the air supply, prior to operating the tool. A rust inhibitive oil is acceptable for air tools.



Boston Pneumatic Tools and Assembly Systems

Tel : +1 (214) 586 3765
www.bostonpneumatic.com

